

Application Note



Using AN-X-DHP with the Wonderware ABCIP DAServer to Access a PLC-5

This application note describes how to configure the Wonderware DASABCIP DAServer to access a PLC-5 using the AN-X-DHP module.

The AN-X-DHP emulates an ENBT and DHRIO module.

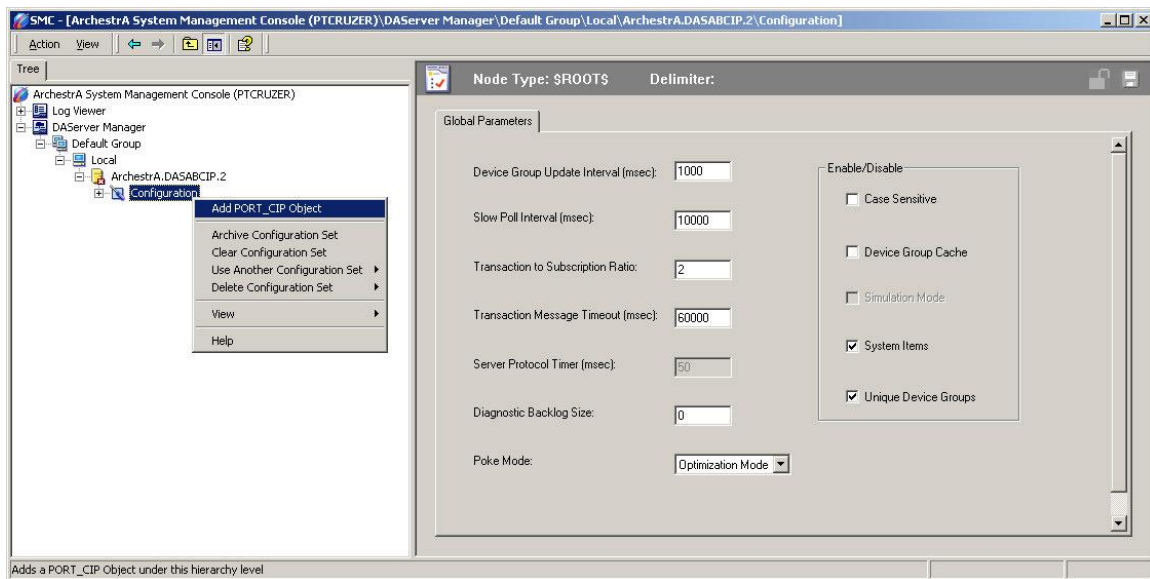
In this example, the AN-X is at node address 7 on Data Highway Plus and the PLC-5 is at node address 77.

Install the ABCIP DAServer supplied by Wonderware. Accept all default settings.

Run "Start -> Programs -> Wonderware -> System Management Console"

Use the following steps to configure it to access data on a PLC-5 using the AN-X-DHP.

Step 1: Add a port object



Quest Technical Solutions

4110 Mourning Dove Court

Melbourne FL 32934

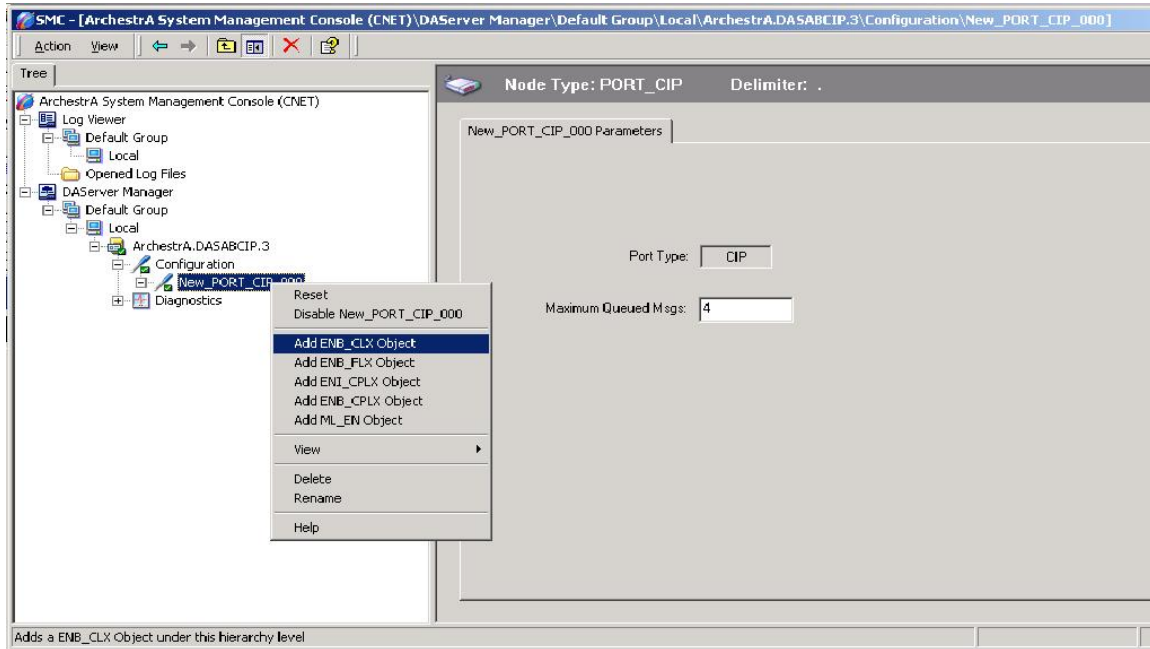
321 757-8483

www.qtsusa.com

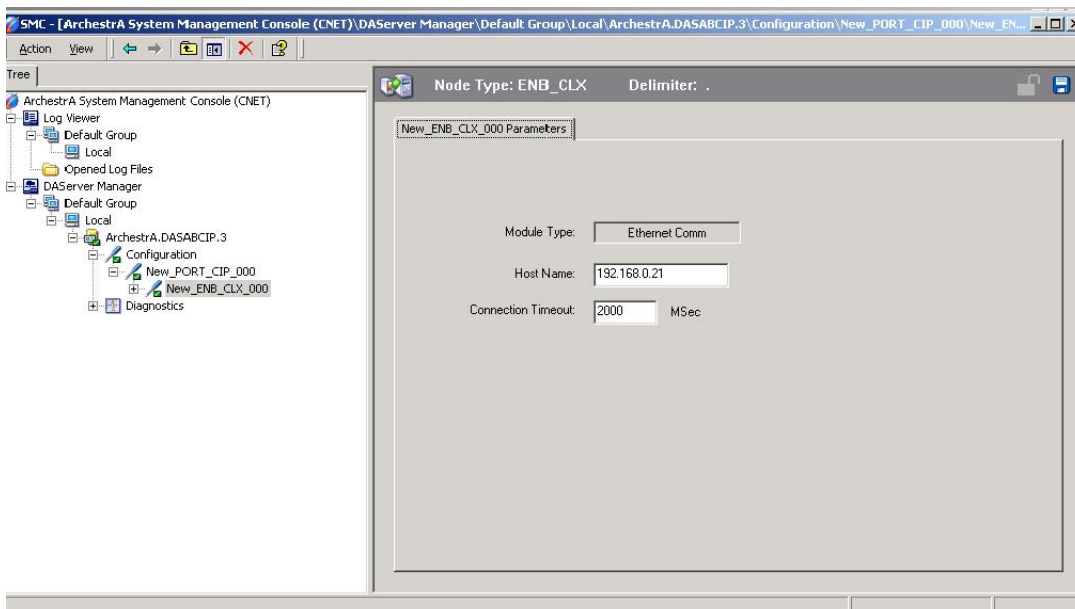


Using AN-X-DHP with the Wonderware ABCIP DAServer to Access a PLC-5

Step 2: Add an ENBT

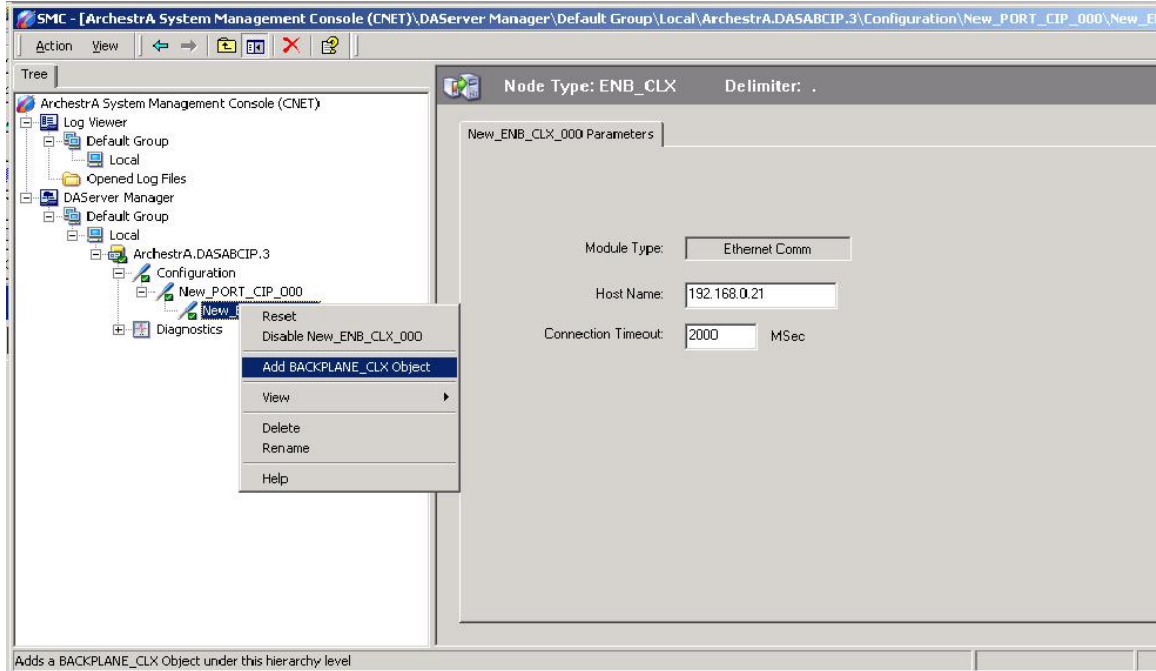


Step 3: Set the Host Name to the AN-X IP address

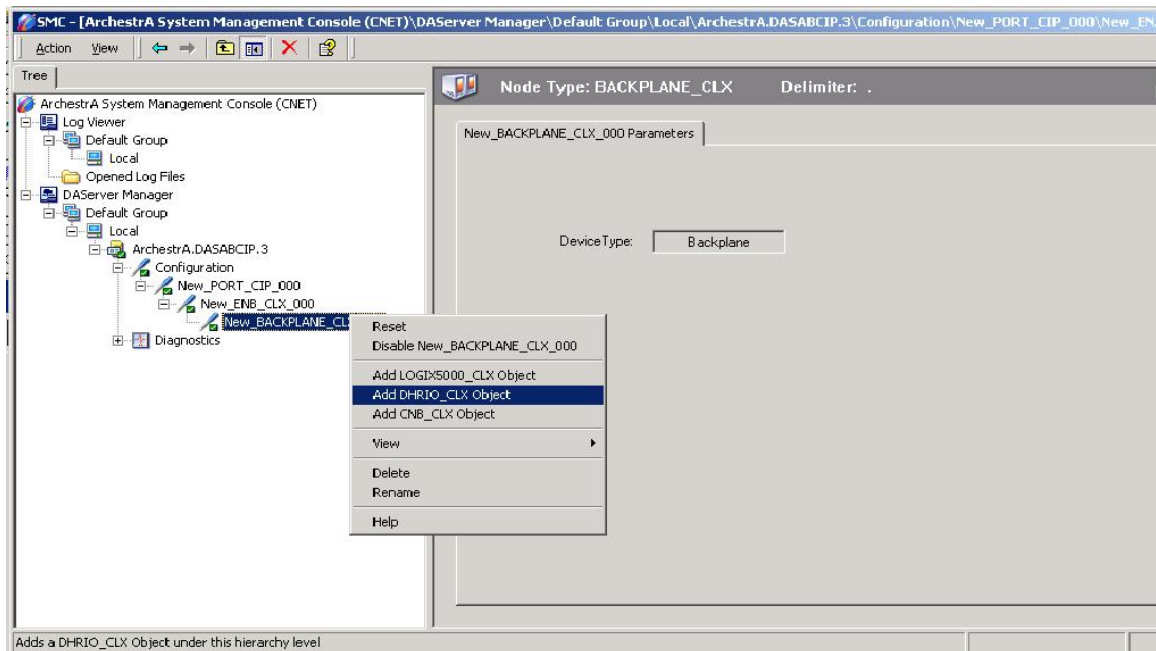


Using AN-X-DHP with the Wonderware ABCIP DAServer to Access a PLC-5

Step 4: Add a backplane

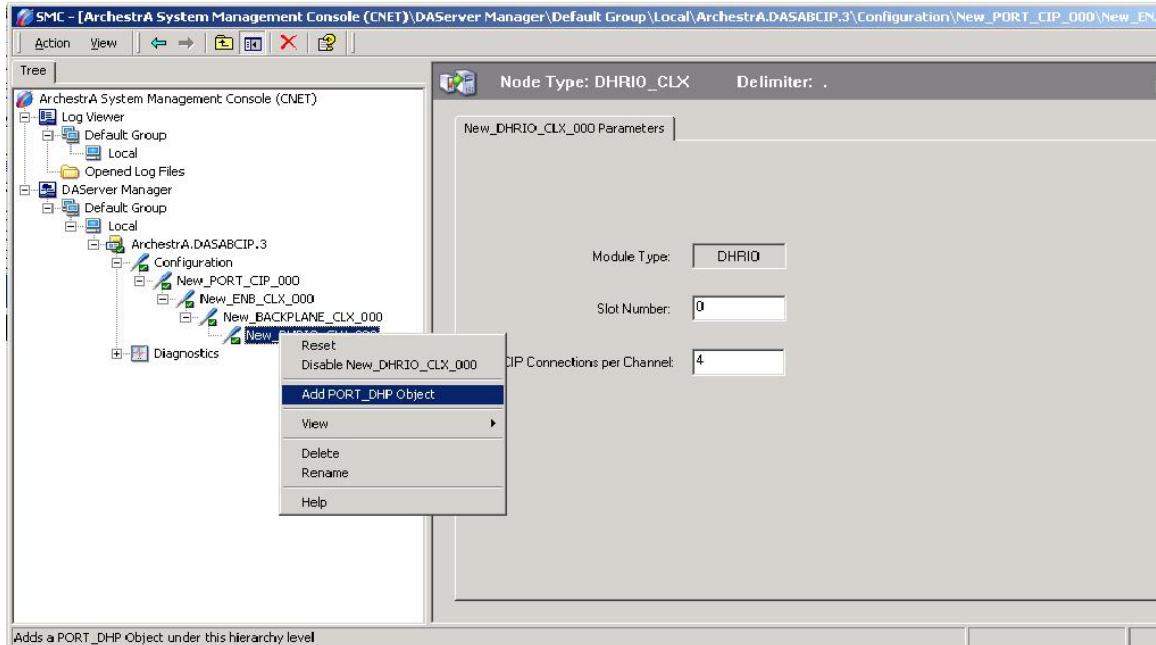


Step 5: Add a DHRIO

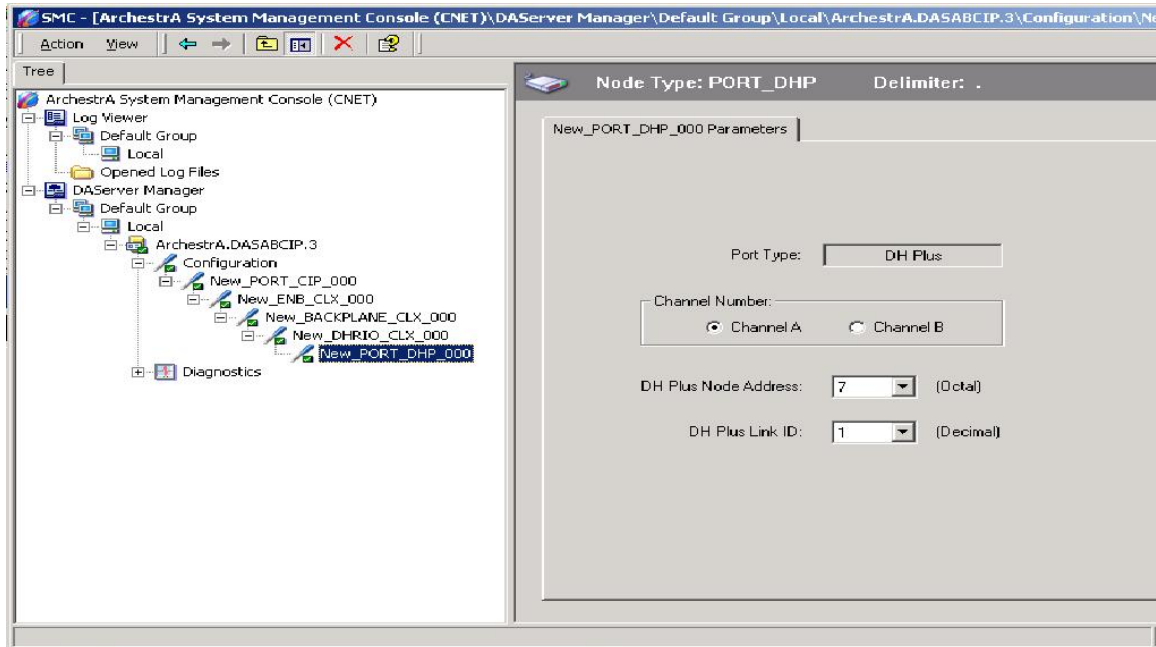


Using AN-X-DHP with the Wonderware ABCIP DAServer to Access a PLC-5

Step 6: Add a Data Highway Plus port

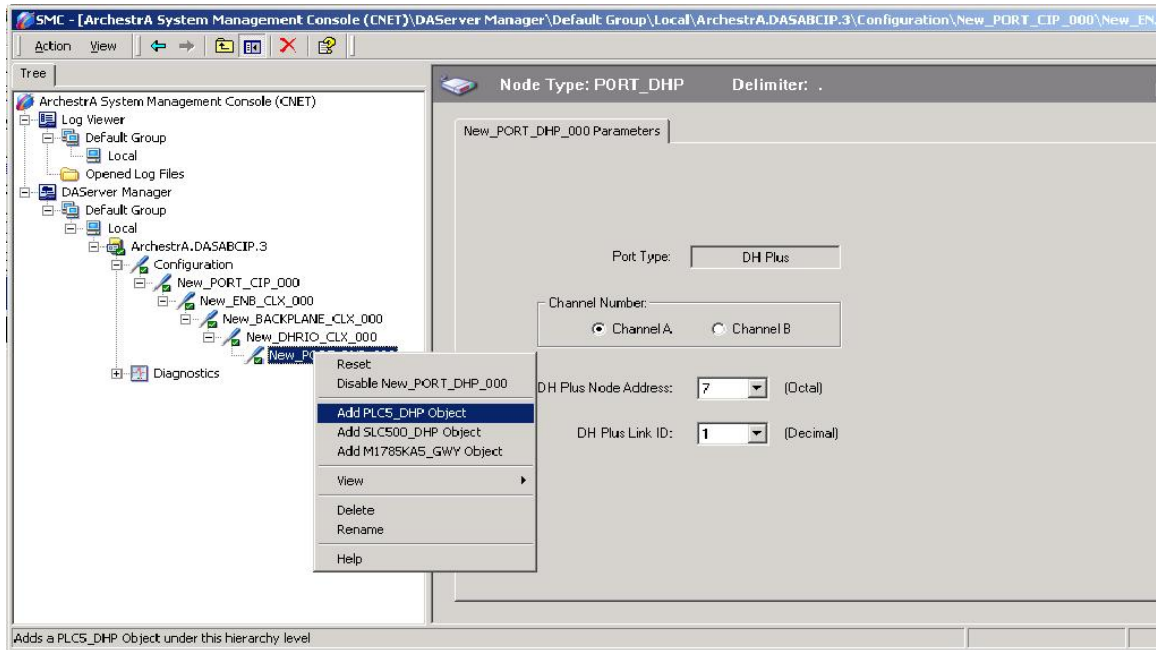


Step 7: Set the port address to match the AN-X Data Highway Plus node address

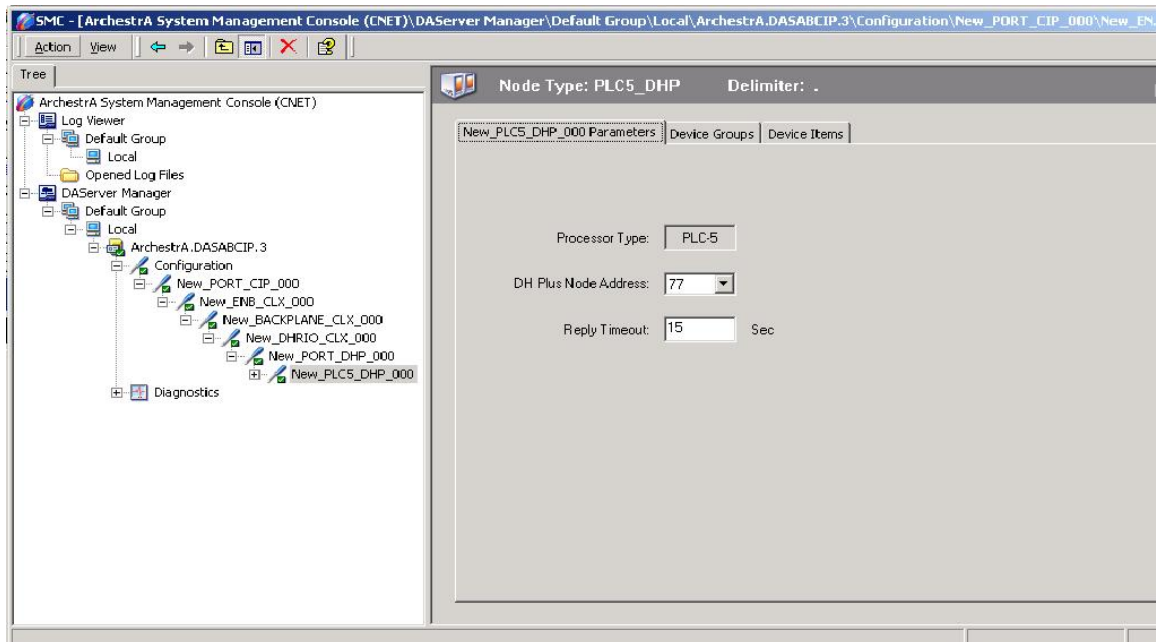


Step 8: Add a PLC-5

Using AN-X-DHP with the Wonderware ABCIP DAServer to Access a PLC-5

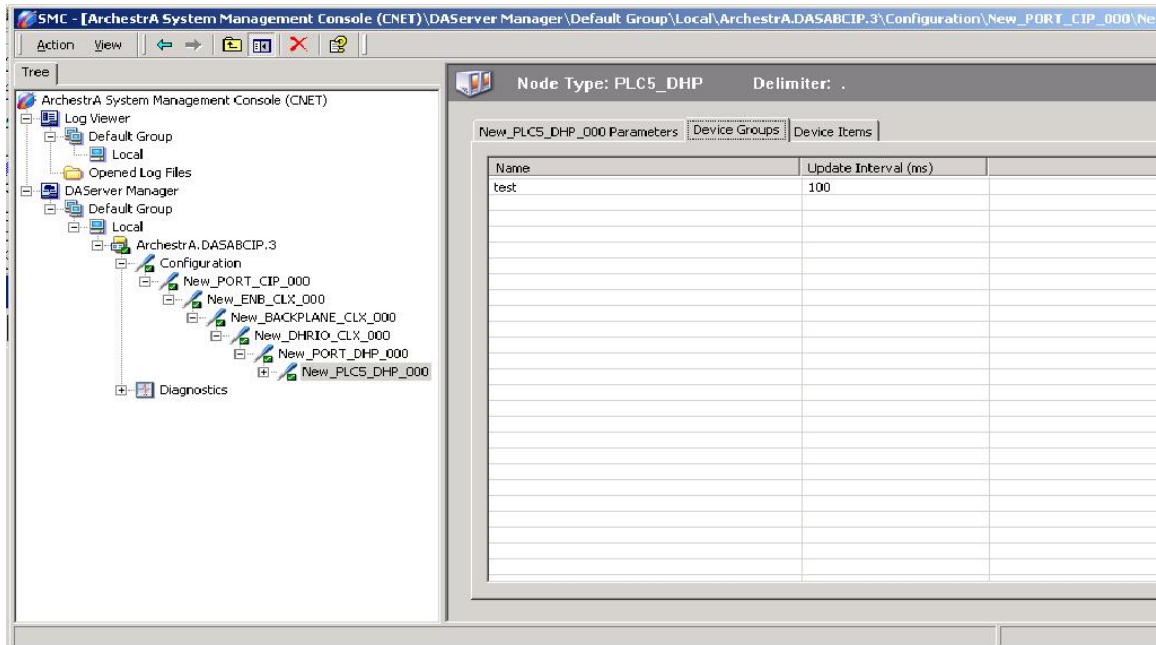


Step 9: Set the Data Highway Plus node to match the destination PLC-5 address



Using AN-X-DHP with the Wonderware ABCIP DAServer to Access a PLC-5

Step 10: Click the Device Groups tab, add any required groups, set the name and update interval for each group.



Quest Technical Solutions
4110 Mourning Dove Court
Melbourne FL 32934
321 757-8483
www.qtsusa.com

